

| | | |
|--|---|-------------------------------------|
| DNP16-06 | MANUAL FOR INSTALLATION AND USE | OKATT by agui |
| By: E. Irazu. Reviewed by: J. Fernández | DNP16-06. PIVOTING BUFFER SUPPORT (HIDARULIC ELEVATOR) | BRAND PRODUCT DEPARTMENT |

1) INTRODUCTION

The purpose of this Manual is to describe the steps for the correct installation and use of the vertical buffer support.

2) WARRANTY

In order to understand and handle this product, you must be legally qualified to install elevators.

AGUI accepts liability, where applicable, for the products included in the shipment. The AGUI warranty may be rendered invalid if parts or components other than those described in these instructions are fitted.

AGUI cannot accept liability for any damage caused by incorrect handling or as the result of action other than that indicated in this manual. The product guarantee may be rendered invalid if used incorrectly or inappropriately.

All current regulations in force for elevator safety have been observed during the manufacture of this product. There may be risks posed to those handling or fitting the product.

It is not permitted, except where explicitly authorised:

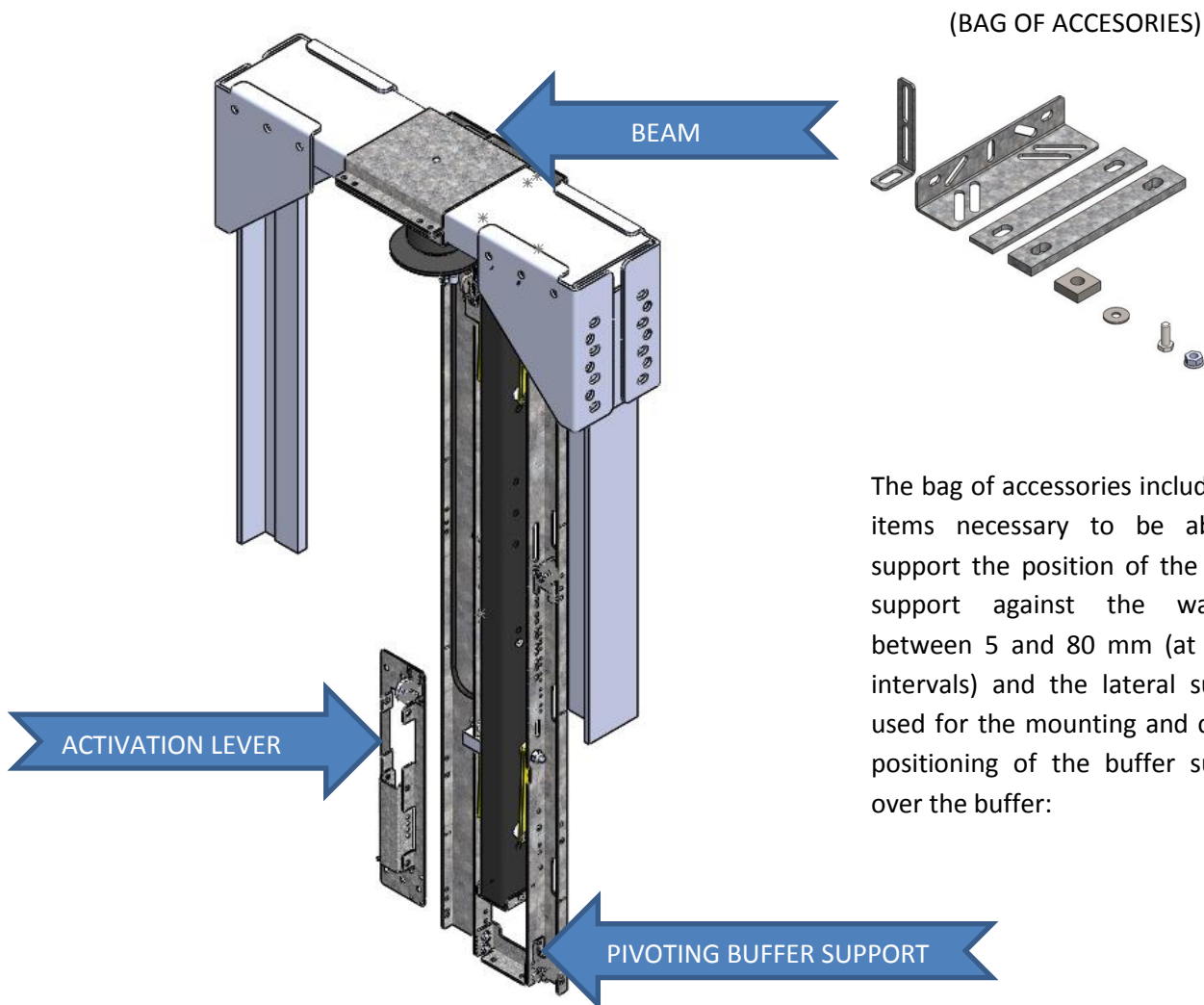
- To use components other than those installed;
- To modify the product in any way;
- To install the product for a purpose other than that for which it is intended;
- To destroy any seal;
- To perform faulty or insufficient inspections and maintenance;
- To use accessories, parts or materials not supplied by AGUI, or that are not official AGUI parts.

| | | |
|--|---|-------------------------------------|
| DNP16-06 | MANUAL FOR INSTALLATION AND USE | OKATT by agui |
| By: E. Irazu. Reviewed by: J. Fernández | DNP16-06. PIVOTING BUFFER SUPPORT (HIDARULIC ELEVATOR) | BRAND PRODUCT DEPARTMENT |

3) COMPONENTS OF THE KIT.

The set consists of the following components:

- PIVOTING BUFFER SUPPORT HIDRAULIC ELEVATOR.
- BEAM + SQUARES + STAPLES + PUFFER + PUFFER SUPPORT.
- ACTIVATION LEVER + CABLES ASSEMBLY WITH TENSIONER.
- BAG OF ACCESORIES.



The bag of accessories includes the items necessary to be able to support the position of the buffer support against the wall to between 5 and 80 mm (at 5 mm intervals) and the lateral support used for the mounting and correct positioning of the buffer support over the buffer:

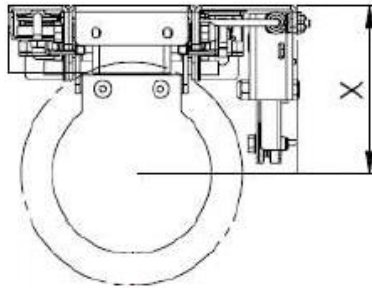
| | | |
|--|---|-------------------------------------|
| DNP16-06 | MANUAL FOR INSTALLATION AND USE | OKATT by agui |
| By: E. Irazu. Reviewed by: J. Fernández | DNP16-06. PIVOTING BUFFER SUPPORT (HIDARULIC ELEVATOR) | BRAND PRODUCT DEPARTMENT |

4) TASKS PRIOR TO ASSEMBLY:

Use the assembly diagram to identify the location of the buffer support and perform the following checks:

Tasks prior to assembly:

- Check the guide type, distance between guides and samples.
- Check Depth X of the buffer support and cross check against the project design.



- Check the type of buffer ensuring that it is compatible with the buffer support.
- Check type of wall fixture. There are three possible situations:
 - Direct*: The buffer support is mounted directly onto the wall.
 - With chocks*: When the distance to the wall is between 5-30 (5 mm intervals)
 - With L fixtures*: When the distance to the wall is between 35-80 (5 mm intervals)
- Check that the area for fixing the buffer support to the wall/structure is clear and suitable for the required fixture.

(NB: The necessary wall plugs are not provided and must be appropriate or the type of wall. The tensile load on each fixture point is 75 kg). Only included concrete plugs.

5) MOUNTING THE BUFFER SUPPORT:

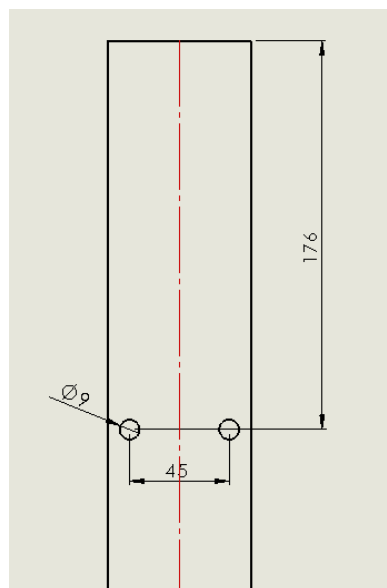
The sequence for a correct assembly is the following:

- **Assembly of beam assembly:**
- **Pivoting buffer support assembly.**
- **Activation lever and cable assembly.**

| | | |
|--|---|-------------------------------------|
| DNP16-06 | MANUAL FOR INSTALLATION AND USE | OKATT by agui |
| By: E. Irazu. Reviewed by: J. Fernández | DNP16-06. PIVOTING BUFFER SUPPORT (HIDARULIC ELEVATOR) | BRAND PRODUCT DEPARTMENT |

- **Assembly of beam assembly:**

Preparation of the tip of the guides, cut both at the same level and make in each of the guides the holes that are indicated in the following detail, its function is to mount a set screws of M8 to prevent slippage of the flanges in case of working near the pressure zone.



Support the tube on the tip of the guides, the two tips must be cut at the same level for a correct support of the tube. Join the assembly formed by the tube and the squares and the plates of union of squares to each one of the guides.

Once fixed the squad to both guys review the tightening of the whole set.

Move the puffer support and place it on the piston shaft in the impact area.

Torque tighten:

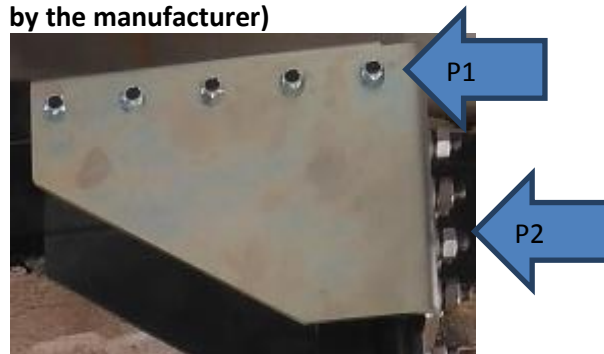
Beam screws: M10 P1: 83Nm

-Fixed fixing guides: P2

Brida M12 P2: 65Nm

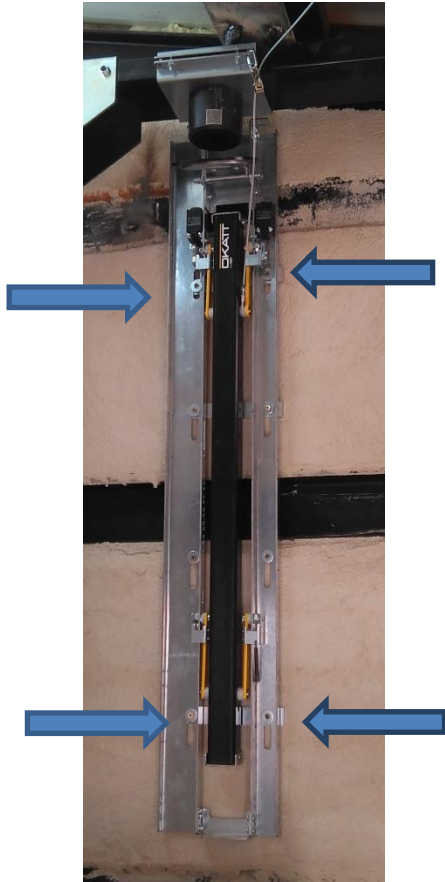
Flange M14 P2: 103Nm.

(Respect the tightening torque recommended by the manufacturer)



| | | |
|--|---|-------------------------------------|
| DNP16-06 | MANUAL FOR INSTALLATION AND USE | OKATT by agui |
| By: E. Irazu. Reviewed by: J. Fernández | DNP16-06. PIVOTING BUFFER SUPPORT (HIDARULIC ELEVATOR) | BRAND PRODUCT DEPARTMENT |

- **Pivoting buffer support assembly.**



Once adjusted in height, it is placed in its position and the holes to be made are marked to fix the buffer support to the walls. The fixation points are:

The tray must be supported on the puffer and the entire slide must be at the top to accompany the puffer and tube in the compression.

-4 in the body in two levels of fixation 2 + 2, in the upper slot and in the lower slot.

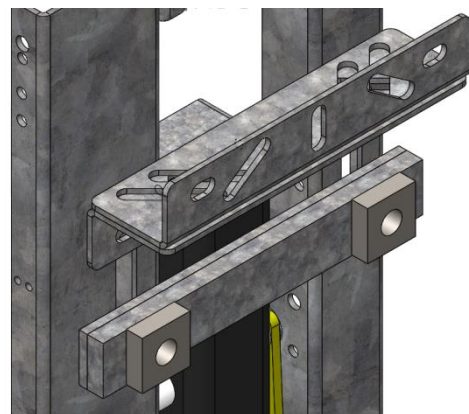
- **Activation lever and cable assembly.**

Re-position the buffer support in its position and, checking that the assembly is perfectly plumbed at all levels, tighten the fixings and verify once again the perfect leveling.

For the leveling and supplement, if necessary, the Side Supplements and the shims that come with the fixings in the accessory bag should be used.

With the fixings or chocks, the assembly is leveled and the irregularities of the pit can be saved. It is important that when assembling them, they are placed in the position indicated in this manual and it is verified that the tube abuts with them when it is in the pick-up position.

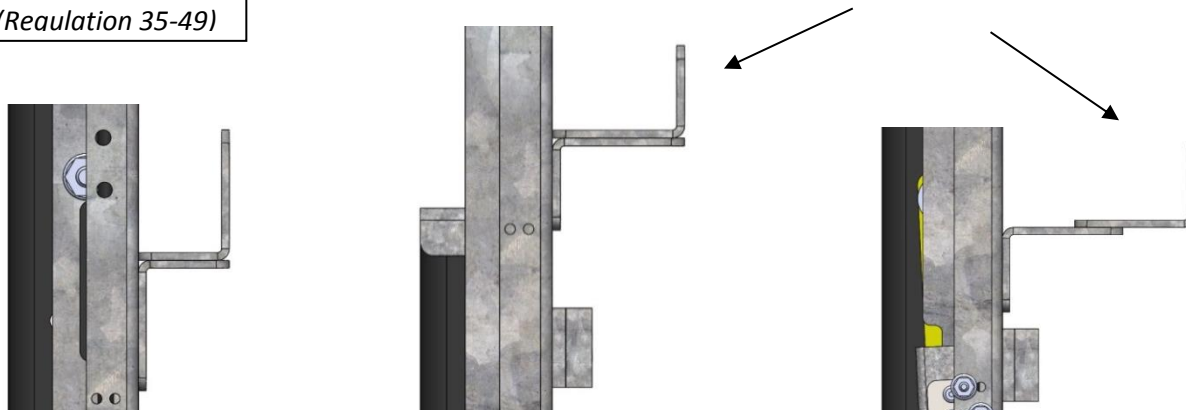
The image shows the two possible assemblies, with fixings for measures 35-80 and with wedges for lower measurements.



(Regulation 50-80)

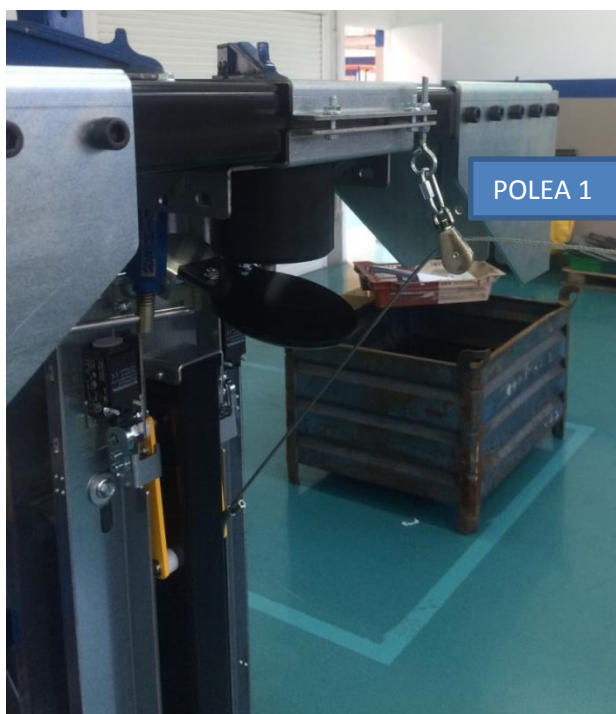
| | | |
|--|---|-------------------------------------|
| DNP16-06 | MANUAL FOR INSTALLATION AND USE | OKATT by agui |
| By: E. Irazu. Reviewed by: J. Fernández | DNP16-06. PIVOTING BUFFER SUPPORT (HIDARULIC ELEVATOR) | BRAND PRODUCT DEPARTMENT |

(Reaulation 35-49)



- **Positioning and assembly of pulleys and cables:**


For the correct operation of the activation and collection system from outside the pit, it is very important that the cable entry and exit is correctly guided. To do this, pulleys are sent along with the cables. The function of these pulleys is to guide the cable entry to avoid excessive angles and that there are bottlenecks in the cables. In the image the pattern to position these pulleys is observed.



The pulley 1 is placed on the puffer support. (inside or outside depending X)

The pulley 2 is placed on the activation system and as high as possible on the floor of the pit or on a wall, but the fall and entry into the pulley 3 must be vertical and without friction.

Pulley 3: It is mounted on the activation system

| | | |
|--|---|---|
| DNP16-06 | MANUAL FOR INSTALLATION AND USE |  |
| By: E. Irazu. Reviewed by: J. Fernández | DNP16-06. PIVOTING BUFFER SUPPORT (HIDARULIC ELEVATOR) | BRAND PRODUCT DEPARTMENT |



Cable regulation system

Cable regulation system:



The cable branch that goes from the buffer support to the tensioner must be cut on site and the length adjusted to suit the installation, once cut, the tensioner is used so that the support tray of the puffer rests on it when activated.